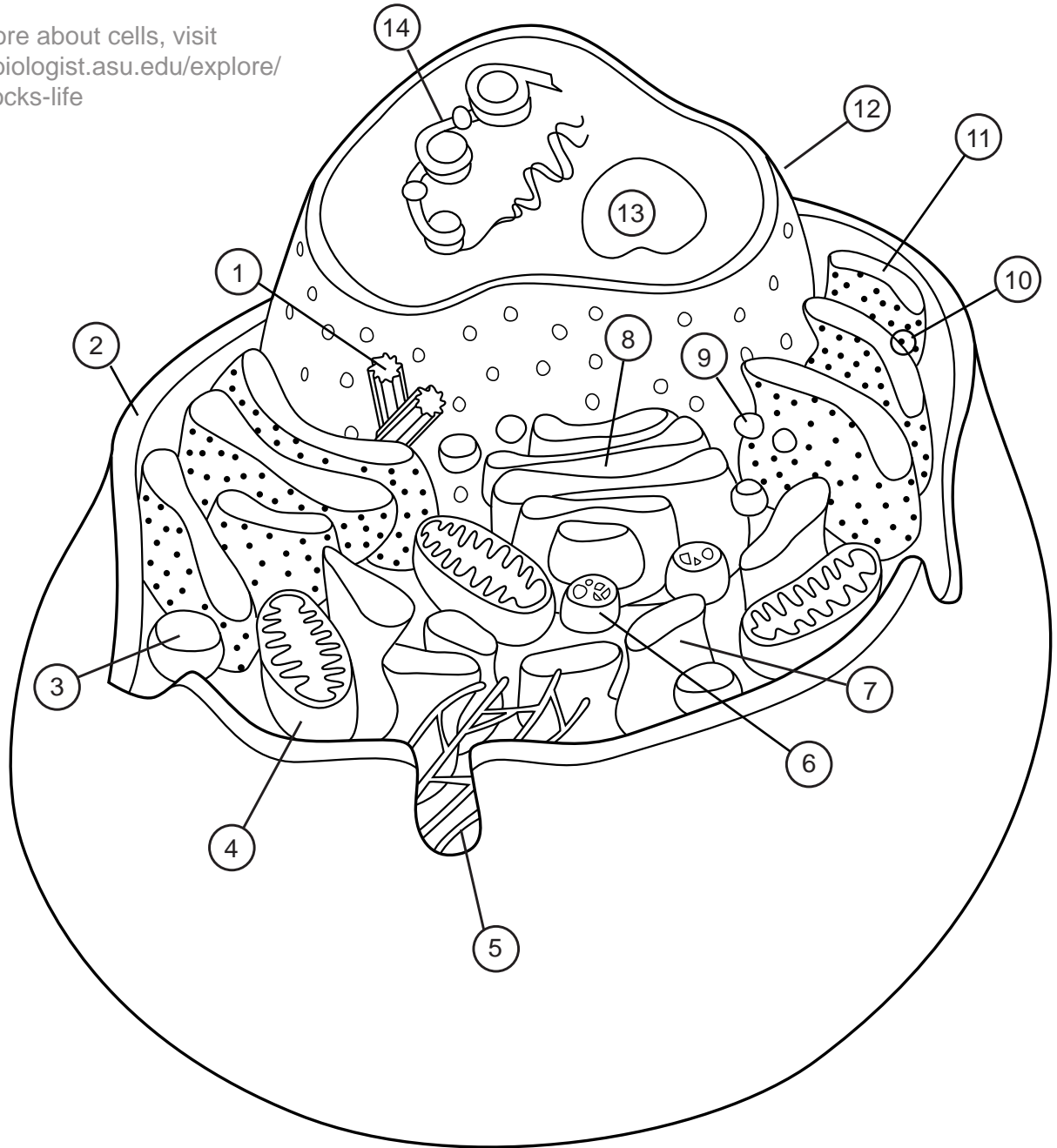


The average adult human has between 60 and 90 trillion cells!

To learn more about cells, visit <http://askabiologist.asu.edu/explore/building-blocks-life>



Color and label parts:

1. \_\_\_\_\_
2. \_\_\_\_\_
3. \_\_\_\_\_
4. \_\_\_\_\_
5. \_\_\_\_\_
6. \_\_\_\_\_
7. \_\_\_\_\_

8. \_\_\_\_\_
9. \_\_\_\_\_
10. \_\_\_\_\_
11. \_\_\_\_\_
12. \_\_\_\_\_
13. \_\_\_\_\_
14. \_\_\_\_\_

# Animal Cell Anatomy Activity Key

1. Centrioles
2. Plasma membrane
3. Peroxisomes
4. Mitochondria
5. Cytoskeleton
6. Lysosomes
7. Smooth endoplasmic reticulum
8. Golgi apparatus
9. Vesicles
10. Ribosomes
11. Rough endoplasmic reticulum
12. Nucleus
13. Nucleolus
14. DNA