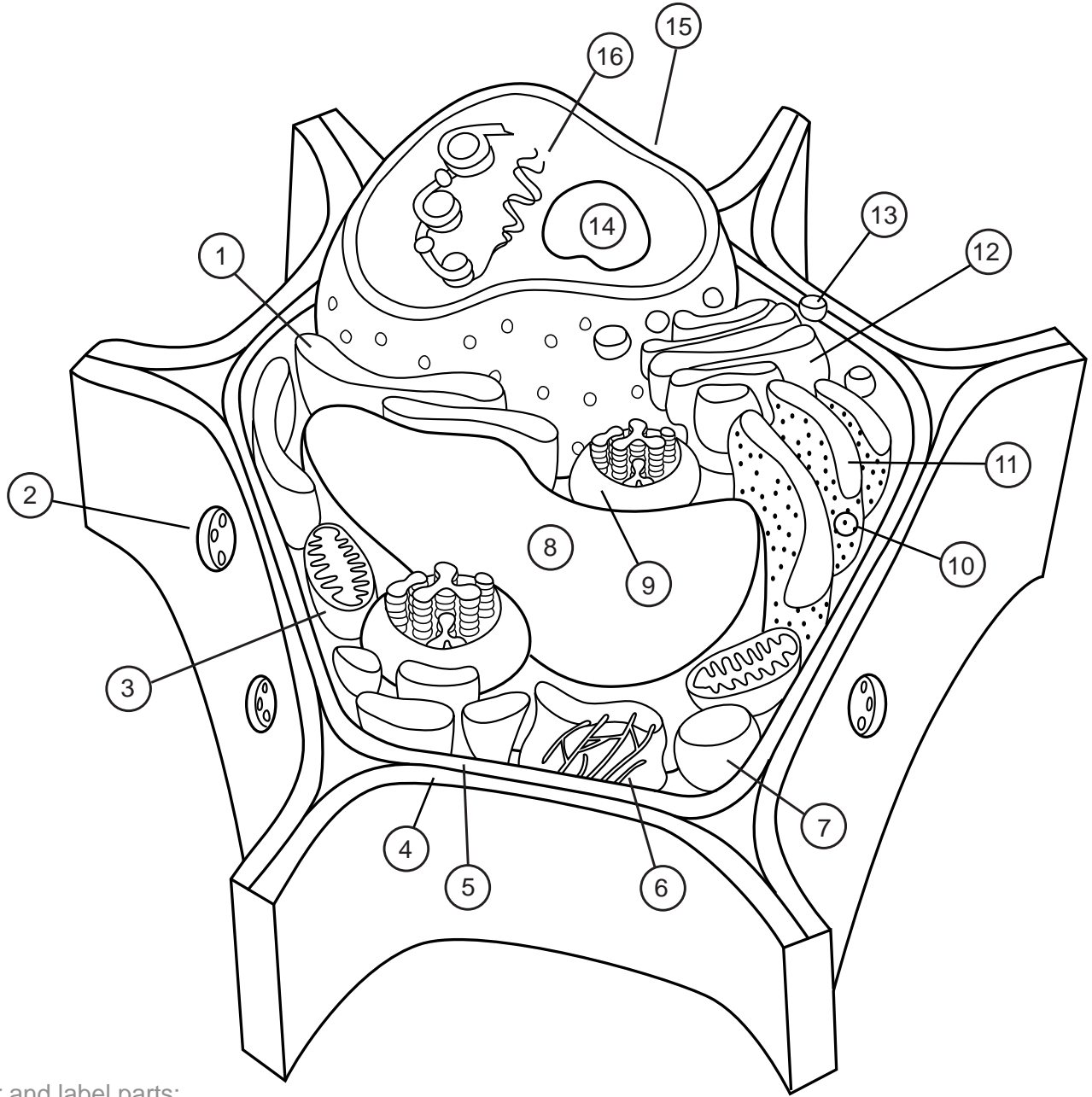


Plant and animal cells have many common parts, but a few are unique to plant cells. Do you know which parts are different? To learn more about cells, visit <http://askabiologist.asu.edu/explore/building-blocks-life>



Color and label parts:

- 1. _____
- 2. _____
- 3. _____
- 4. _____
- 5. _____
- 6. _____
- 7. _____
- 8. _____

- 9. _____
- 10. _____
- 11. _____
- 12. _____
- 13. _____
- 14. _____
- 15. _____
- 16. _____

Plant Cell Anatomy Activity Key

1. Smooth endoplasmic reticulum
2. Plasmodesmata
3. Mitochondria
4. Cell wall
5. Cell membranes
6. Cytoskeleton
7. Peroxisomes
8. Vacuole
9. Chloroplast
10. Ribosomes
11. Rough endoplasmic reticulum
12. Golgi Apparatus
13. Vesicles
14. Nucleolus
15. Nucleus
16. DNA