

[Across]

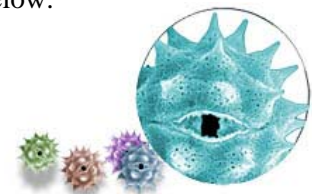
4. Making a copy of something and presenting as the original.
6. Parts of living things made for easy dispersal and reproduction.
8. Scientific tests or technology use to investigate crimes.
11. Time of year or season when many people have allergies.
13. Abbreviation for Crime Scene Investigation.
14. The study of spores and pollen.
16. These plants are responsible for many allergies.
18. Reaction our body can have to things like pollen, dust, and molds.
19. Microscopic objects such as pollen and spores studied by scientists.
20. Break down of living material or to decompose, to become rotten.

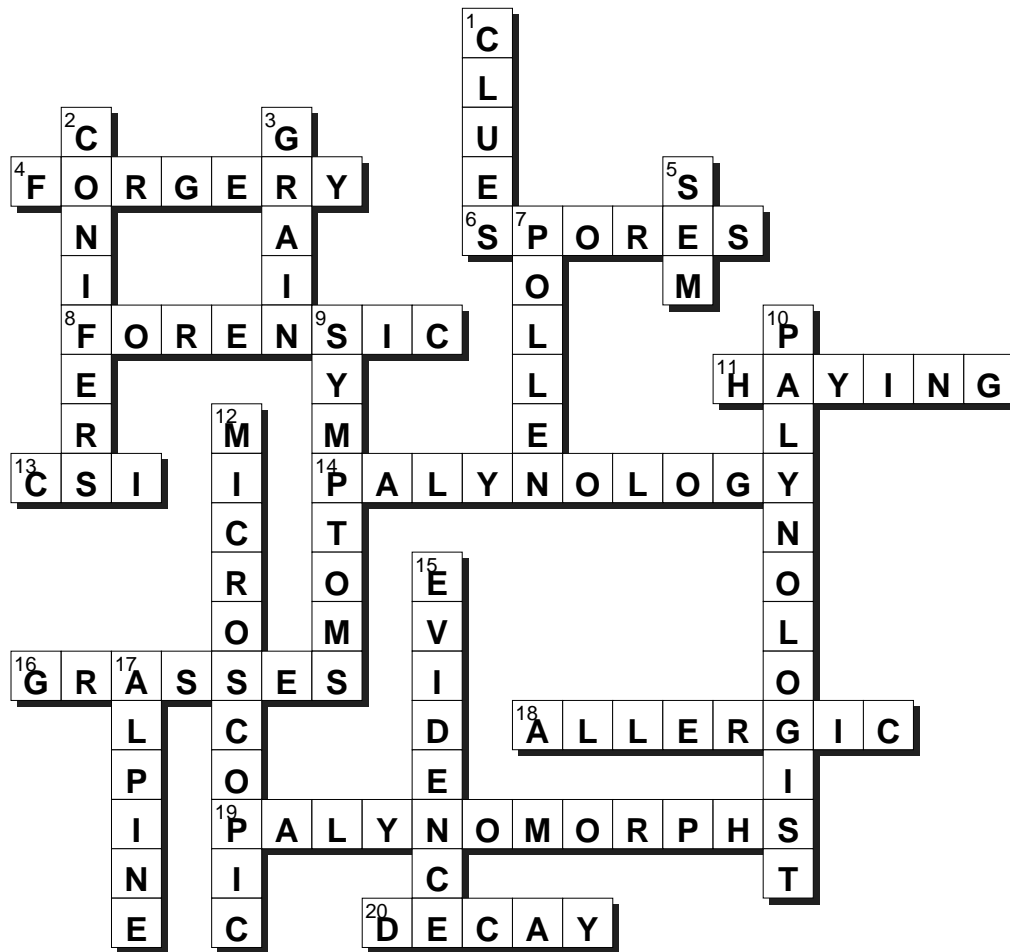
[Down]

1. Things used help solve a problem or mystery.
2. Pine trees are examples of _____.
3. Individual pollen.
5. Abbreviation for scanning electron microscope.
7. Male spores.
9. Changes in your body when you are sick.
10. Person who studies spores and pollen.
12. Too small to be seen with only your eyes.
15. Used to determine if something is the truth.
17. High mountain regions

Try our crossword puzzle based on one of our Web articles. You can learn more about this topic when you read the article *Pollen - Nature's Tiny Clues* Web address below.

(<http://askabiologist.asu.edu/content/pollen>)

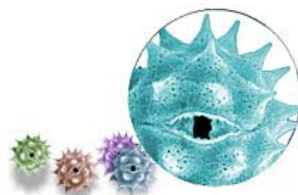




[Across]

- 4. FORGERY...
- 6. SPORES...
- 8. FORENSIC...
- 11. HAYING...
- 13. CSI...
- 14. PALYNOLOGY...
- 16. GRASSES...
- 18. ALLERGIC...
- 19. PALYNOMORPHS...
- 20. DECAY...

SOLUTION



[Down]

- 1. CLUES...
- 2. CONIFERS...
- 3. GRAIN...
- 5. SEM...
- 7. POLLEN...
- 9. SYMPTOMS...
- 10. PALYNOLOGIST...
- 12. MICROSCOPIC...
- 15. EVIDENCE...
- 17. ALPINE...

This solution above will let you see how well you did with the puzzle. Try some of the other puzzles at the *Ask A Biologist* website listed below.